

FINISH OPTIONS

6 UNIQUE & TIMELESS FINISHES



BLACK



BLACK SATIN



SILVER & BLACK



ANTIQUE BRONZE



ANTIQUE NICKEL



RUBBED BRONZE

*COLOR MAY VARY DUE TO THE UNIQUE NATURE OF THE FINISHES



FI5518-44



FI5519-44



FI5500-44



FI5501-44



FI3101-1-1/4
Shoe with 1-1/4" Base



FI3101
Shoe with 1-1/2" Base



FI3104
Shoe with Screw Attachments



FI3102
Pitch Shoe 38°



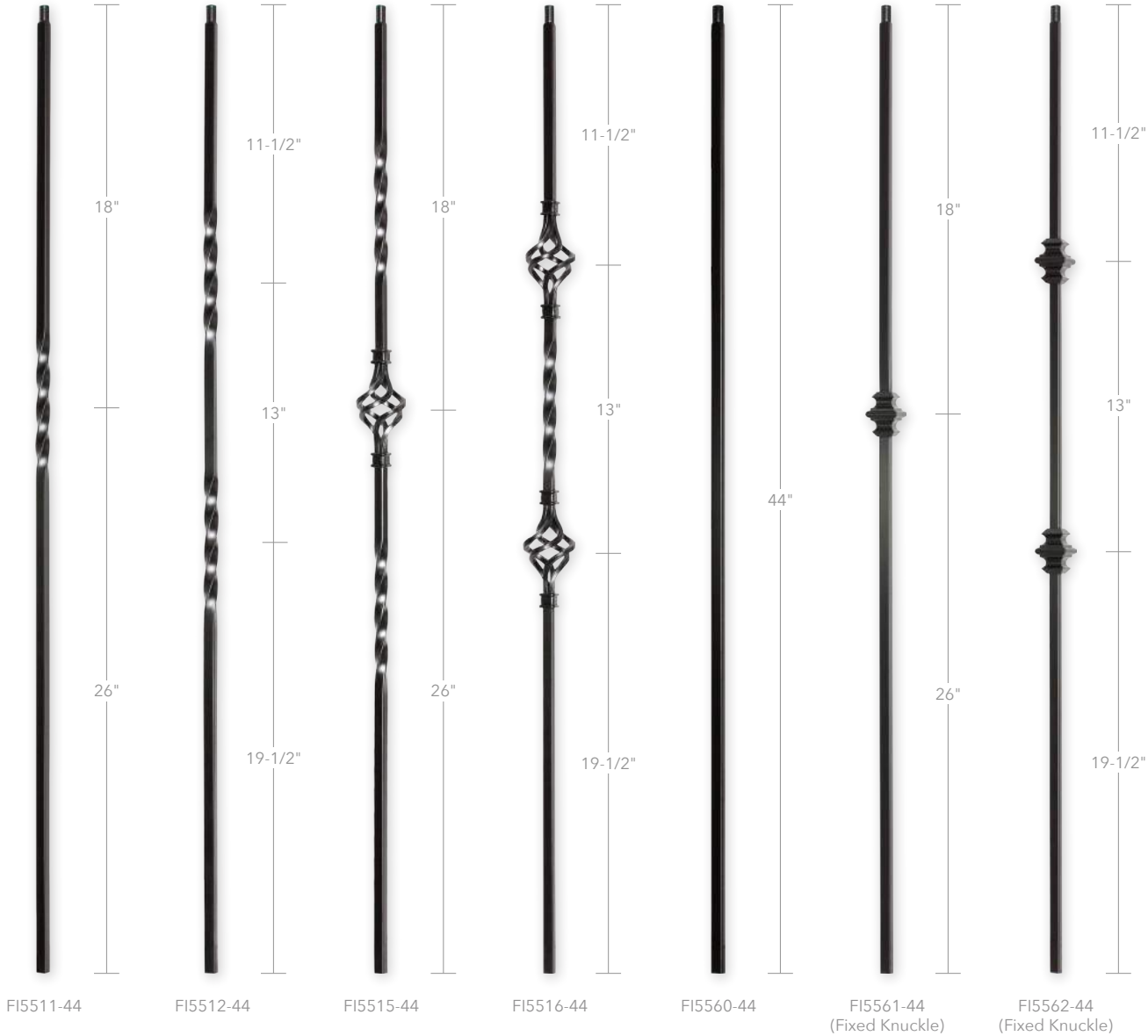
FI3103
Decorative Knuckle



Bar Stock Detail
1/2" Square

Forged Iron Balusters									
Part #	B	BS	SB	AB	AN	RB	Description	Size	Weight / Each (lbs)
FI5518-44	x	x		x	x		Twist/Butterfly/Leaf	1/2" X 44"	3.75
FI5519-44	x	x		x	x		Twist/Butterfly/Scroll	1/2" X 44"	3.75
FI5500-44	x		x	x	x	x	7" Scroll	1/2" X 44"	5.4
FI5501-44	x	x	x	x	x	x	4-1/4" Code Scroll	1/2" X 44"	5.2
Forged Iron Shoes									
Part #	B	BS	SB	AB	AN	RB	Description	Size	Weight / Each (lbs)
FI3101-1-1/4	x	x	x	x	x	x	Iron Shoe 1-1/4" Base	1/2"	0.14
FI3101	x	x	x	x	x	x	Iron Shoe 1-1/2" Base	1/2"	0.14
FI3104	x	x	x	x	x	x	Shoe/Screw	1/2"	0.15
FI3102	x	x	x	x	x	x	Iron Pitch Shoe	1/2"	0.15
FI3103	x	x	x	x	x	x	Iron Adjustable Knuckle	1/2"	0.15
B = Black • BS = Black Satin • SB = Silver & Black • AB = Antique Bronze • AN = Antique Nickel • RB = Rubbed Bronze									
*Finishes vary based on powdercoating process									
**Product availability may vary by warehouse location									

*Shoes enlarged to show detail. Shoes shown fit balusters on pages 45-46.
*Hollow versions of these balusters available on pages 53-54.



*Hollow versions of these balusters available on pages 53-54.

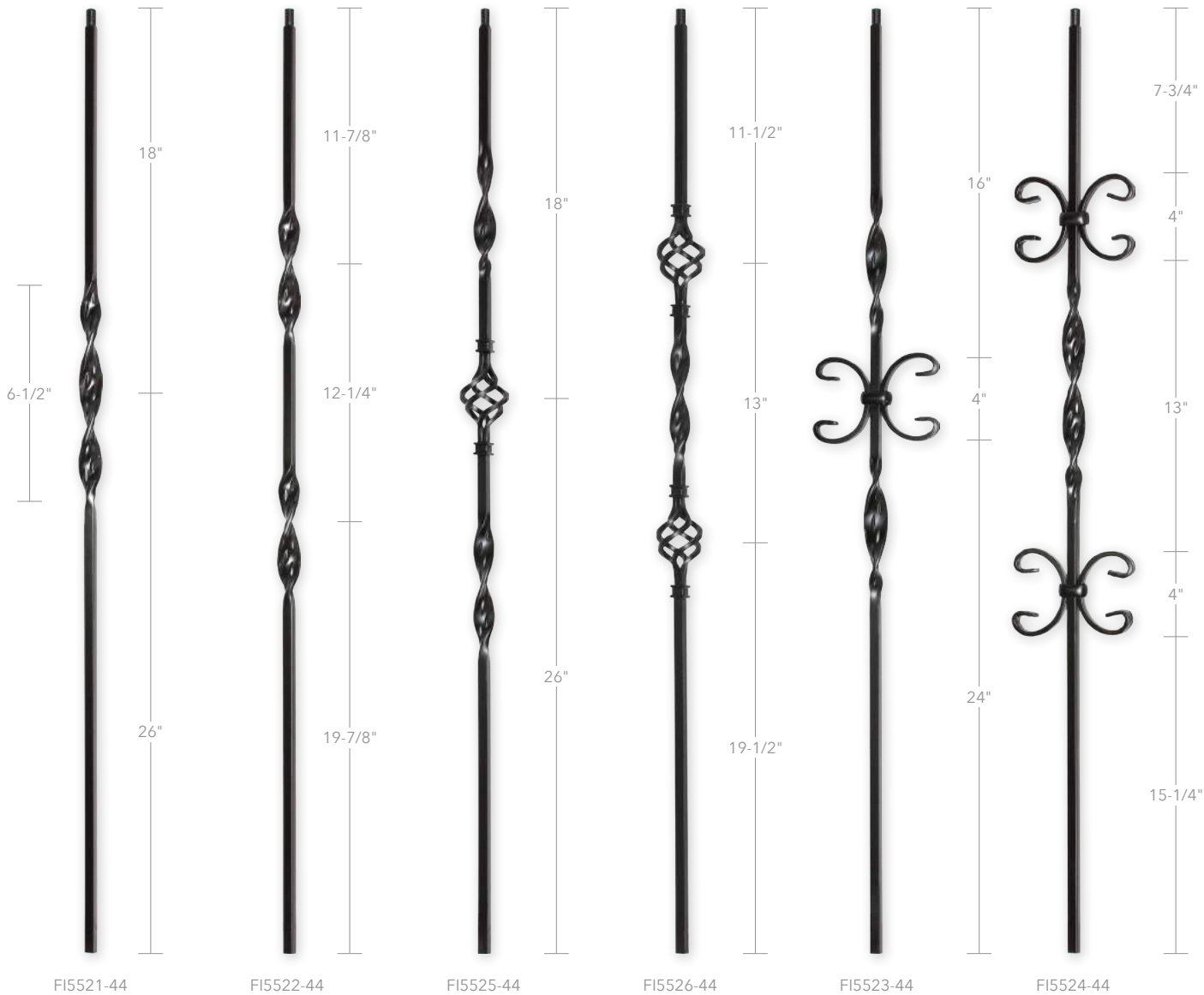
Forged Iron Balusters									
Part #	B	BS	SB	AB	AN	RB	Description	Size	Weight / Each (lbs)
FI5511-44	x	x	x	x	x	x	One Twist	1/2" X 44"	2.6
FI5512-44	x	x	x	x	x	x	Two Twist	1/2" X 44"	2.66
FI5515-44	x	x	x	x	x	x	One Basket Two Twist	1/2" X 44"	3.3
FI5516-44	x	x	x	x	x	x	Two Basket One Twist	1/2" X 44"	3.3
FI5560-44	x	x	x	x	x	x	Plain Bar	1/2" X 44"	2.75
FI5561-44	x	x	x	x			Plain One Knuckle	1/2" X 44"	3.1
FI5562-44	x	x	x	x			Plain Two Knuckles	1/2" X 44"	3.45
Forged Iron Shoes									
Part #	B	BS	SB	AB	AN	RB	Description	Size	Weight / Each (lbs)
FI3101-1-1/4	x	x	x	x	x	x	Iron Shoe 1-1/4" Base	1/2"	0.14
FI3101	x	x	x	x	x	x	Iron Shoe 1-1/2" Base	1/2"	0.14
FI3104	x	x	x	x	x	x	Shoe/Screw	1/2"	0.15
FI3102	x	x	x	x	x	x	Iron Pitch Shoe	1/2"	0.15
FI3103	x	x	x	x	x	x	Iron Adjustable Knuckle	1/2"	0.15
B = Black • BS = Black Satin • SB = Silver & Black • AB = Antique Bronze • AN = Antique Nickel • RB = Rubbed Bronze									
*Finishes vary based on powdercoating process									
**Product availability may vary by warehouse location									



Bar Stock Detail
1/2" Square

PROVENCE

1/2" SOLID FORGED IRON



Forged Iron Balusters									
Part #	B	BS	SB	AB	AN	RB	Description	Size	Weight / Each (lbs)
FI5521-44	x	x	x	x	x	x	One Ribbon	1/2" X 44"	2.66
FI5522-44	x	x	x	x	x	x	Two Ribbon	1/2" X 44"	2.27
FI5525-44	x	x	x	x	x	x	Two Ribbon One Basket	1/2" X 44"	3.1
FI5526-44	x	x	x	x	x	x	Two Basket One Ribbon	1/2" X 44"	3.1
FI5523-44	x	x	x	x	x	x	One Butterfly Two Ribbon	1/2" X 44"	3.4
FI5524-44	x	x	x	x	x	x	Two Butterfly One Ribbon	1/2" X 44"	3.7
Forged Iron Shoes									
Part #	B	BS	SB	AB	AN	RB	Description	Size	Weight / Each (lbs)
FI3101-1-1/4	x	x	x	x	x	x	Iron Shoe 1-1/4" Base	1/2"	0.14
FI3101	x	x	x	x	x	x	Iron Shoe 1-1/2" Base	1/2"	0.14
FI3104	x	x	x	x	x	x	Shoe/Screw	1/2"	0.15
FI3102	x	x	x	x	x	x	Iron Pitch Shoe	1/2"	0.15
B = Black • BS = Black Satin • SB = Silver & Black • AB = Antique Bronze • AN = Antique Nickel • RB = Rubbed Bronze									
*Finishes vary based on powdercoating process									
**Product availability may vary by warehouse location									

*Shoes enlarged to show detail. Shoes shown fit balusters on page 47. *Hollow versions of these balusters available on pages 53-54.



Bar Stock Detail
1/2" Square



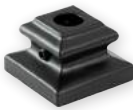
FI5573-44



FI5574-44



FI5575-44



FI3101-5
Shoe with 1-1/2" Base



FI3104-5
Shoe with Screw Attachments



FI3102-5
Pitch Shoe 38°

*Shoes enlarged to show detail. Shoes shown fit balusters on page 48.
*Hollow versions of these balusters available on pages 53-54.

Forged Iron Balusters									
Part #	B	BS	SB	AB	AN	RB	Description	Size	Weight / Each (lbs)
FI5573-44	x	x				x	Round One Ball	1/2" X 44"	2
FI5574-44	x	x				x	Round Two Balls	1/2" X 44"	2.25
FI5575-44	x	x				x	Round Plain	1/2" X 44"	1.75
Forged Iron Shoes									
Part #	B	BS	SB	AB	AN	RB	Description	Size	Weight / Each (lbs)
FI3101-5	x					x	Round Shoe	1/2"	0.14
FI3104-5	x	x				x	Shoe/Screw Round	1/2"	0.15
FI3102-5	x	x				x	Iron Pitch Round Shoe	1/2"	0.13
B = Black • BS = Black Satin • SB = Silver & Black • AB = Antique Bronze • AN = Antique Nickel • RB = Rubbed Bronze									
*Finishes vary based on powdercoating process									
**Product availability may vary by warehouse location									



Bar Stock Detail
1/2" Round

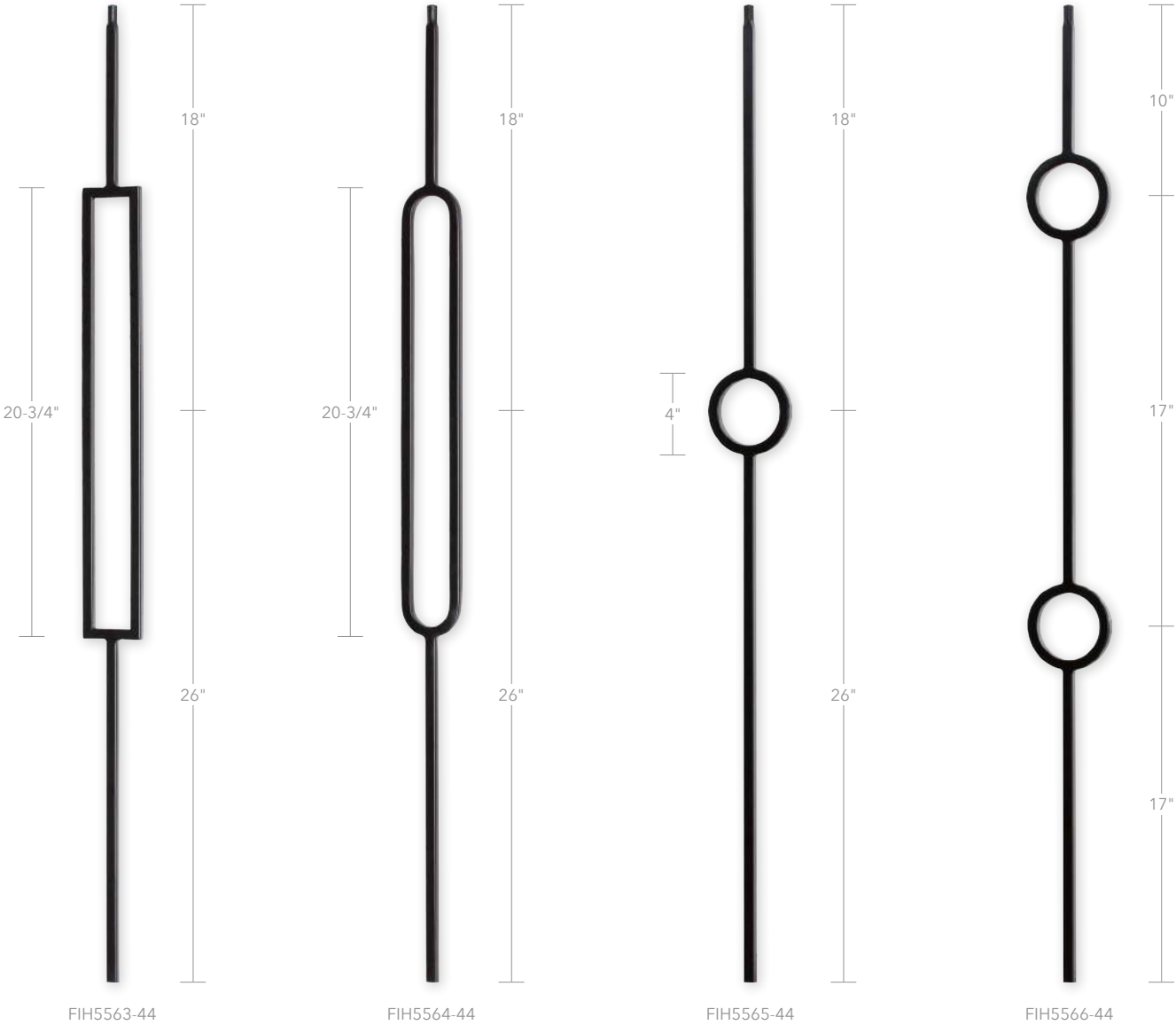


*Shoes enlarged to show detail. Shoes shown fit balusters on page 49.



Bar Stock Detail
9/16" Round

Forged Iron Balusters									
Part #	B	BS	SB	AB	AN	RB	Description	Size	Weight / Each (lbs)
FIH5577-44		x					9/16" Spoon Round Collar	9/16" x 44"	1.65
FIH5578-44		x					9/16" Spoon 2 Round Collar	9/16" x 44"	1.95
FIH5576-44		x					9/16" Round Tube	9/16" X 44"	.85
Forged Iron Shoes									
Part #	B	BS	SB	AB	AN	RB	Description	Size	Weight / Each (lbs)
FI3105		x					Shoe Round Base	9/16"	0.14
FI3108		x					Iron Shoe 1-1/2" Base	9/16"	0.14
B = Black • BS = Black Satin • SB = Silver & Black • AB = Antique Bronze • AN = Antique Nickel • RB = Rubbed Bronze									
*Finishes vary based on powdercoating process									
**Product availability may vary by warehouse location									



FI3101-1-1/4
Shoe with 1-1/4" Base



FI3101
Shoe with 1-1/2" Base



FI3104
Shoe with Screw Attachments



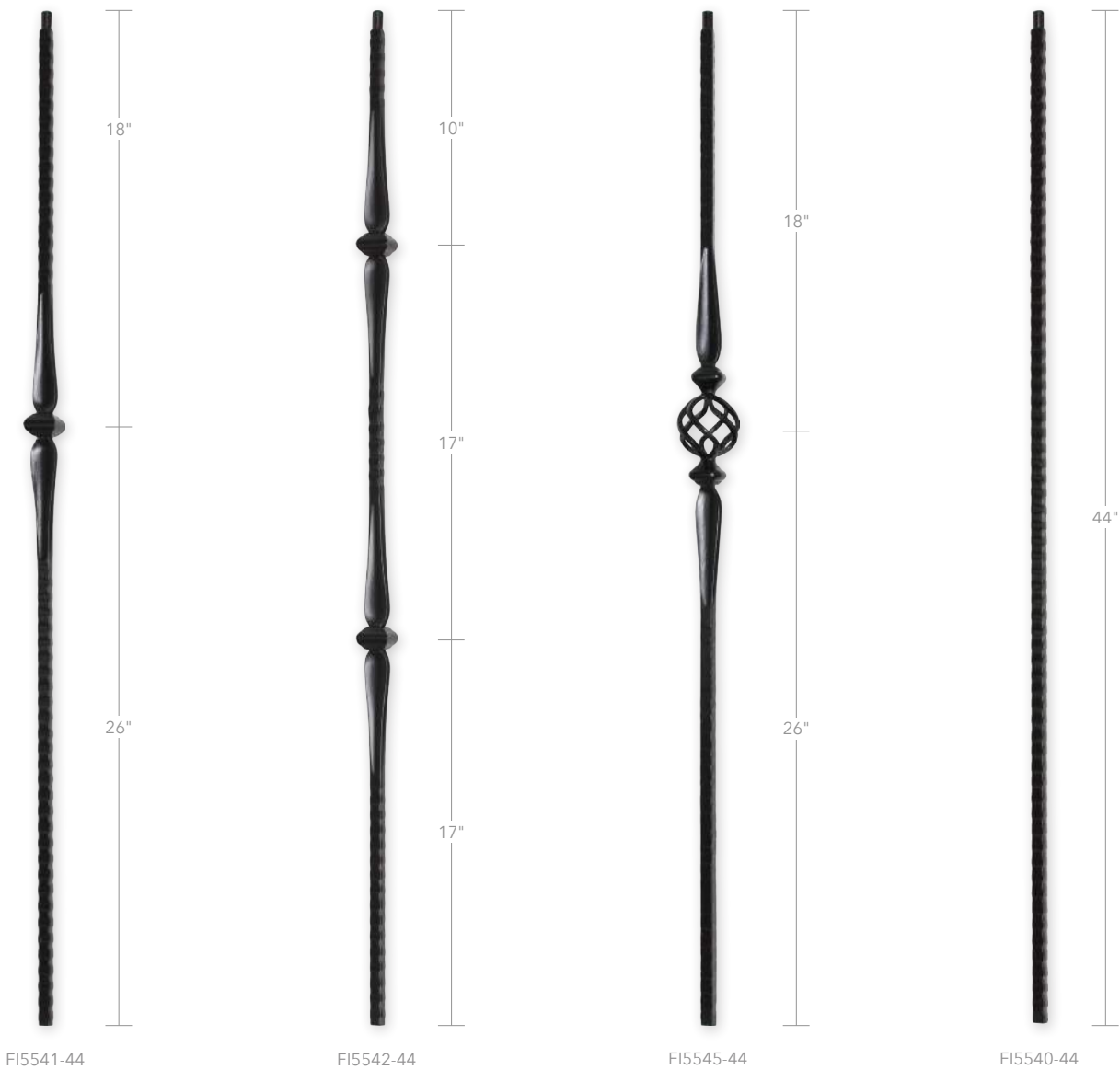
FI3102
Pitch Shoe 38°

*Shoes enlarged to show detail. Shoes shown fit balusters on page 50.

Forged Iron Balusters									
Part #	B	BS	SB	AB	AN	RB	Description	Size	Weight / Each (lbs)
FIH5563-44		x					Rectangle Modern	1/2" X 44"	1.15
FIH5564-44		x					Oval Modern	1/2" X 44"	1.60
FIH5565-44		x					Circle Modern	1/2" X 44"	1.30
FIH5566-44		x					Two Circle Modern	1/2" X 44"	1.90
Forged Iron Shoes									
Part #	B	BS	SB	AB	AN	RB	Description	Size	Weight / Each (lbs)
FI3101-1-1/4	x	x	x	x	x	x	Iron Shoe 1-1/4" Base	1/2"	0.14
FI3101	x	x	x	x	x	x	Iron Shoe 1-1/2" Base	1/2"	0.14
FI3104	x	x	x	x	x	x	Shoe/Screw	1/2"	0.15
FI3102	x	x	x	x	x	x	Iron Pitch Shoe	1/2"	0.15
B = Black • BS = Black Satin • SB = Silver & Black • AB = Antique Bronze • AN = Antique Nickel • RB = Rubbed Bronze									
*Finishes vary based on powdercoating process									
**Product availability may vary by warehouse location									



Bar Stock Detail
1/2" Square

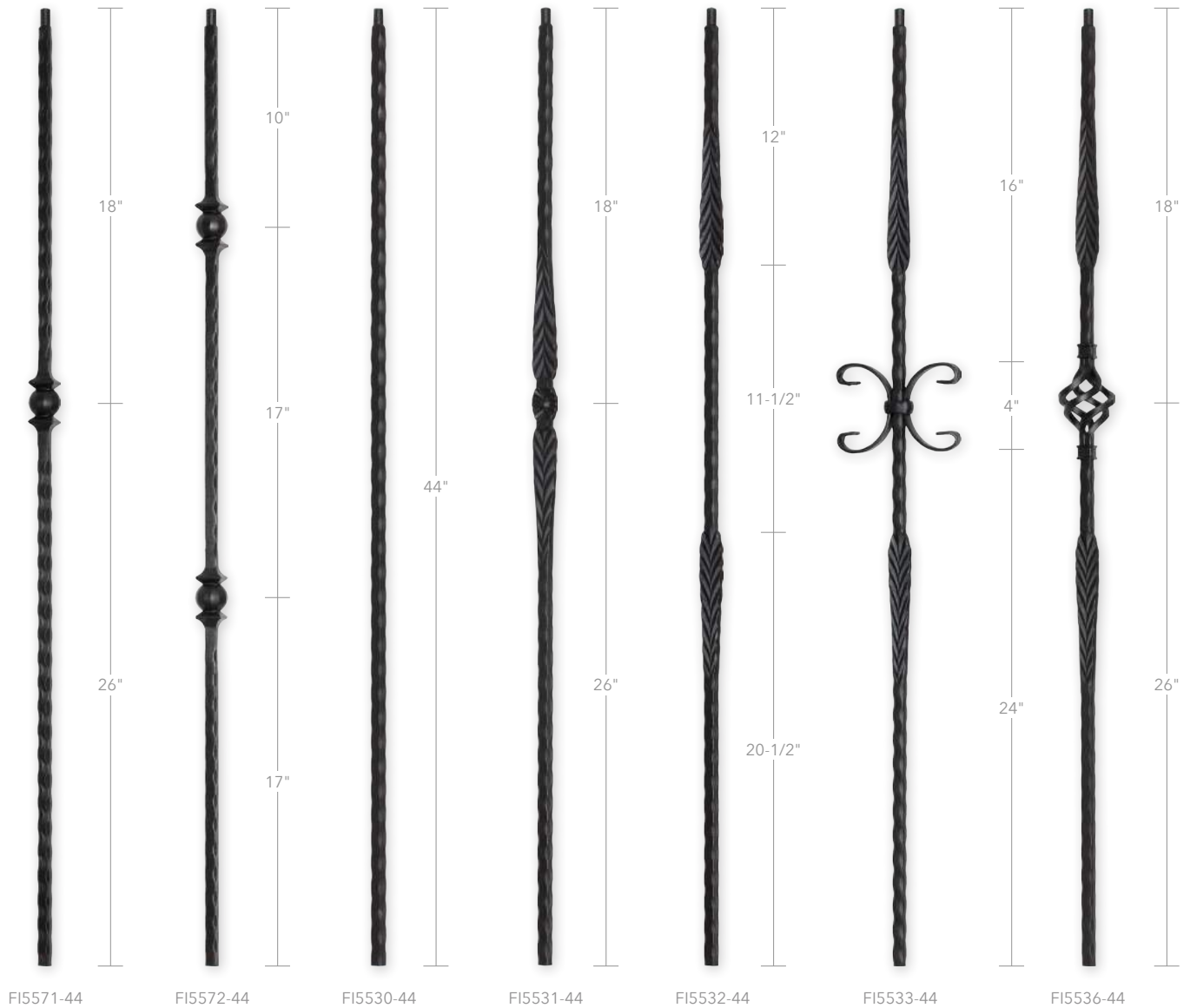


*Shoes enlarged to show detail. Shoes shown fit balusters on page 51-52.
**Hollow versions of these balusters available on pages 53-54.



Bar Stock Stamped Detail
9/16" Square

Forged Iron Balusters									
Part #	B	BS	SB	AB	AN	RB	Description	Size	Weight / Each (lbs)
FI5541-44	x	x	x	x	x		Ribbed Spoon Knuckle	9/16" X 44"	3.7
FI5542-44	x	x	x	x	x		Ribbed Two Spoon/Knuckle	9/16" X 44"	2.9
FI5545-44	x	x	x	x	x		Ribbed Spoon Knuckle/Basket	9/16" X 44"	2.9
FI5540-44	x	x	x	x	x		Ribbed Plain Bar	9/16" X 44"	2.75
Forged Iron Shoes									
Part #	B	BS	SB	AB	AN	RB	Description	Size	Weight / Each (lbs)
FI3101-2	x	x	x	x	x	x	Iron Shoe	9/16"	0.14
FI3104-2	x	x	x	x			Shoe/Screw	9/16"	0.14
FI3102-2	x	x	x	x	x	x	Iron Pitch Shoe	9/16"	0.15
B = Black • BS = Black Satin • SB = Silver & Black • AB = Antique Bronze • AN = Antique Nickel • RB = Rubbed Bronze									
*Finishes vary based on powdercoating process									
**Product availability may vary by warehouse location									



*Hollow versions of these balusters available on pages 53-54.

Forged Iron Balusters									
Part #	B	BS	SB	AB	AN	RB	Description	Size	Weight / Each (lbs)
FI5571-44	x	x	x	x			Hammered One Ball	9/16" X 44"	2.9
FI5572-44	x	x	x	x			Hammered Two Ball	9/16" X 44"	2.9
FI5530-44	x	x	x	x			Hammered Edge	9/16" X 44"	2.75
FI5531-44	x	x	x	x			Arrow / Flower	9/16" X 44"	4
FI5532-44	x	x	x	x			Two Arrows	9/16" X 44"	4
FI5533-44	x	x	x	x			Two Arrows/ Butterfly	9/16" X 44"	3.7
FI5536-44	x	x	x	x			Two Arrows/Basket	9/16" X 44"	3.1
Forged Iron Shoes									
Part #	B	BS	SB	AB	AN	RB	Description	Size	Weight / Each (lbs)
FI3101-2	x	x	x	x	x	x	Iron Shoe	9/16"	0.14
FI3104-2	x	x	x	x			Shoe/Screw	9/16"	0.14
FI3102-2	x	x	x	x	x	x	Iron Pitch Shoe	9/16"	0.15
B = Black • BS = Black Satin • SB = Silver & Black • AB = Antique Bronze • AN = Antique Nickel • RB = Rubbed Bronze									
*Finishes vary based on powdercoating process									
**Product availability may vary by warehouse location									



Bar Stock Scalloped Detail
9/16" Square

HOLLOW IRON

MONTE CARLO



FIH5501-44

DID YOU KNOW?

Hollow iron is more cost effective, easier to cut and install, and has the same elegant appearance as our solid options.

BORDEAUX



FIH5511-44



FIH5512-44



FIH5515-44



FIH5516-44



FIH5560-44

PROVENCE



FIH5521-44



FIH5522-44



FIH5525-44



FIH5526-44

Forged Hollow Iron Balusters								
Part #	B	BS	SB	AB	AN	RB	Description	Size
FIH5501-44	x	x		x	x	x	4-1/4 Scroll	1/2" X 44"
FIH5511-44	x	x		x	x	x	One Twist	1/2" X 44"
FIH5512-44	x	x		x	x	x	Two Twist	1/2" X 44"
FIH5515-44	x	x		x	x	x	One Basket Two Twist	1/2" X 44"
FIH5516-44	x	x		x	x	x	Two Basket One Twist	1/2" X 44"
FIH5521-44	x			x		x	One Ribbon	1/2" X 44"
FIH5522-44	x			x		x	Two Ribbon	1/2" X 44"
FIH5525-44	x			x		x	One Basket	1/2" X 44"
FIH5526-44	x			x		x	Two Basket	1/2" X 44"
FIH5530-44	x			x		x	One Scallop	9/16" X 44"
FIH5560-44	x	x		x	x	x	Plain	1/2" X 44"
FIH5540-44	x			x		x	Ribbed Plain Bar	9/16" X 44"
FIH5541K-44*	x			x		x	Ribbed Spoon Knuckle	9/16" X 44"
FIH5542K-44*	x			x		x	Ribbed Two Spoon/Knuckle	9/16" X 44"
FIH5545K-44*	x			x		x	Ribbed Spoon Knuckle/Basket	9/16" X 44"
FIH5571-44	x			x		x	Scallop One Ball	9/16" X 44"
FIH5572-44	x			x		x	Scallop Two Ball	9/16" X 44"
FIH5563-44		x					Rectangle Modern	1/2" X 44"
FIH5564-44		x					Oval Modern	1/2" X 44"
FIH5565-44		x					Circle Modern	1/2" X 44"
FIH5566-44		x					Two Circle Modern	1/2" X 44"
FIH5576-44		x					9/16" Round Tube	9/16" X 44"
FIH5577-44		x					9/16" Spoon Round Collar	9/16" x 44"
FIH5578-44		x					9/16" Spoon 2 Round Collar	9/16" x 44"

B = Black • BS = Black Satin • SB = Silver & Black • AB = Antique Bronze
AN = Antique Nickel • RB = Rubbed Bronze

*For knee wall application

**Finishes vary based on powdercoating process

***Product availability may vary by warehouse location

HOLLOW IRON

LINZ



FIH5563-44



FIH5564-44



FIH5565-44



FIH5566-44

COPENHAGEN



FIH5577-44



FIH5578-44



FIH5576-44

TAVISTOCK



FIH5541K-44



FIH5542K-44



FIH5545K-44



FIH5540-44

RAVENNA



FIH5571-44



FIH5572-44



FIH5530-44

IRON NEWEL POSTS



FI4111-48



FI4115-48



FI4121-48



FI4141-48



FI3400
Newel Attachment &
Shoe with Screws and Wrench

Forged Iron Newels								
Part #	B	BS	SB	AB	AN	RB	Description	Size
FI4111-48	x	x	x	x			One Twist	1-3/16" X 48"
FI4115-48	x	x	x	x			Two Twist One Basket	1-3/16" X 48"
FI4121-48	x	x	x	x			One Ribbon	1-3/16" X 48"
FI4141-48	x	x	x	x			Spindle/Knuckle	1-3/16" X 48"
B = Black • BS = Black Satin • SB = Silver & Black • AB = Antique Bronze AN = Antique Nickel • RB = Rubbed Bronze								
* Finishes vary based on powdercoating process								
** Product availability may vary by warehouse location								
Forged Iron Shoes and Knuckles								
Part #	B	BS	SB	AB	AN	RB	Description	Size
FI3400	x	x	x	x			Newel Shoe	1-3/16"
* Finishes vary based on powdercoating process								
** Product availability may vary by warehouse location								
Weight / Each (lbs)								
								18
								20
								18
								21

*Shoe enlarged to show detail. Shoe shown fits newels on page 55.

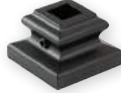
IRON ACCESSORIES

SHOES & TOOLS

SHOES & KNUCKLE FOR SQUARE 1/2" BALUSTERS



FI3101-1-1/4
Shoe with 1-1/4" Base



FI3101
Shoe with 1-1/2" Base



FI3104
Shoe with Screw Attachments

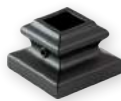


FI3102
Pitch Shoe 38°



FI3103
Decorative Knuckle

SHOES FOR SQUARE 9/16" BALUSTERS



FI3101-2
Shoe with 1-1/2" Base

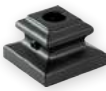


FI3104-2
Shoe with Screw Attachments



FI3102-2
Pitch Shoe 38°

SHOES FOR ROUND 1/2" BALUSTERS



FI3101-5
Shoe with 1-1/2" Base



FI3104-5
Shoe with Screw Attachments



FI3102-5
Pitch Shoe 38°



FI3105
Shoe with Round Base



FI3108
Shoe with 1-1/2" Base

SHOES FOR ROUND 9/16" BALUSTERS

TOOLS & ACCESSORIES FOR INSTALLATION



FI3200-NZ
Nozzle
(Distributes 1:1 mixture)



FI3200-EF
Two-Part Epoxy and
Hardening Agent



FI3200
Epoxy Gun



FI3300
Touch Up Pens
(Sold individually)



FI3001
Hex Wrench for Iron Shoes

Forged Iron Shoes and Knuckles									
Part #	B	BS	SB	AB	AN	RB	Description	Size	Weight / Each (lbs)
FI3101	x	x	x	x	x	x	Iron Shoe	1/2"	0.14
FI3101-1-1/4	x	x	x	x	x	x	Iron Shoe 1-1/4" Base	1/2"	0.14
FI3101-2	x	x	x	x	x	x	Iron Shoe	9/16"	0.14
FI3101-5	x					x	Round Shoe	1/2"	0.14
FI3101-NS	x	x	x	x			Shoe without Set Screws	1/2"	0.14
FI3102	x	x	x	x	x	x	Iron Pitch Shoe	1/2"	0.15
FI3102-2	x	x	x	x	x	x	Iron Pitch Shoe	9/16"	0.15
FI3102-5	x	x				x	Iron Pitch Round Shoe	1/2"	0.13
FI3103	x	x	x	x	x	x	Iron Adjustable Knuckle	1/2"	0.15
FI3104	x	x	x	x	x	x	Shoe/Screw	1/2"	0.15
FI3104-2	x	x	x	x			Shoe/Screw	9/16"	0.14
FI3104-5	x	x				x	Shoe/Screw Round	1/2"	0.15
FI3105	x	x	x	x		x	Shoe Round Base	1/2"	0.14
FI3106	x	x					Round Shoe	9/16"	0.13
FI3107	x	x					Iron Shoe 9/16" Round	9/16"	0.14
B = Black • BS = Black Satin • SB = Silver & Black • AB = Antique Bronze AN = Antique Nickel • RB = Rubbed Bronze									
* Finishes vary based on powdercoating process									
** Product availability may vary by warehouse location									

DID YOU KNOW?

Fitts' specially formulated pen colors have been coordinated with Valspar® to replicate paint finishes on forged iron products for quick and easy touch ups.

Touch Up Pen Colors:

FI3300-B	Black
FI3300-BS	Black Satin
FI3300-BRNZ	Bronze
FI3300 NCKL	Nickel
FI3300-COPR	Copper

To replicate forged iron finishes, use the following color combinations:

- **Black**
Black Touch Up Pen
- **Black Satin**
Black Satin Touch Up Pen
- **Antique Bronze**
Bronze & Black Touch Up Pens
- **Silver & Black**
Nickel & Black Satin Touch Up Pens
- **Antique Nickel**
Nickel & Black Touch Up Pens
- **Rubbed Bronze**
Bronze & Copper Touch Up Pens